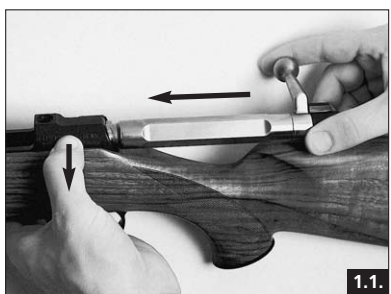
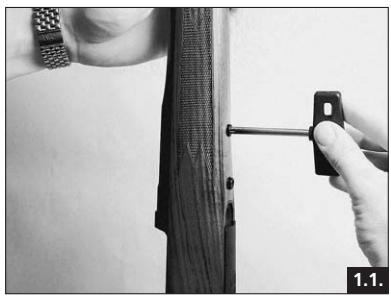
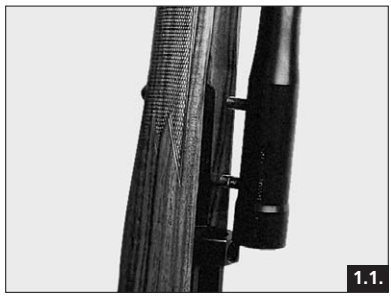


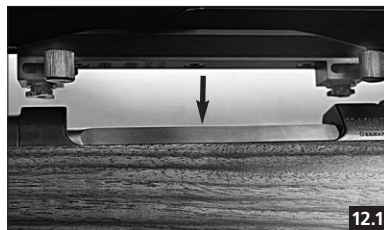
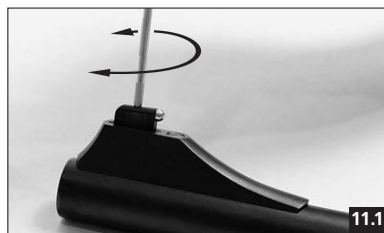
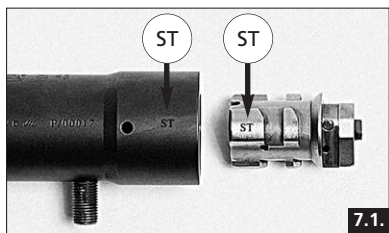
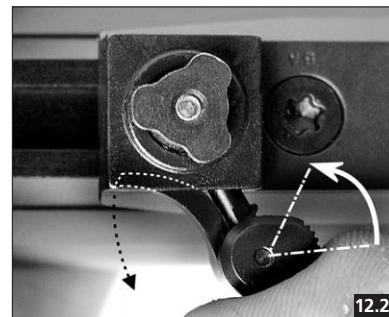
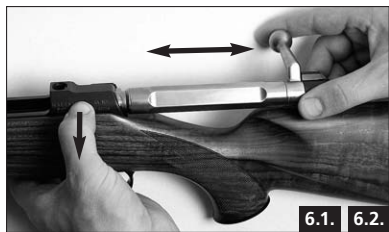
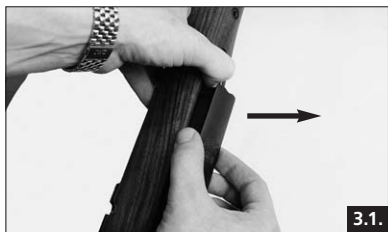
MAUSER  
M03

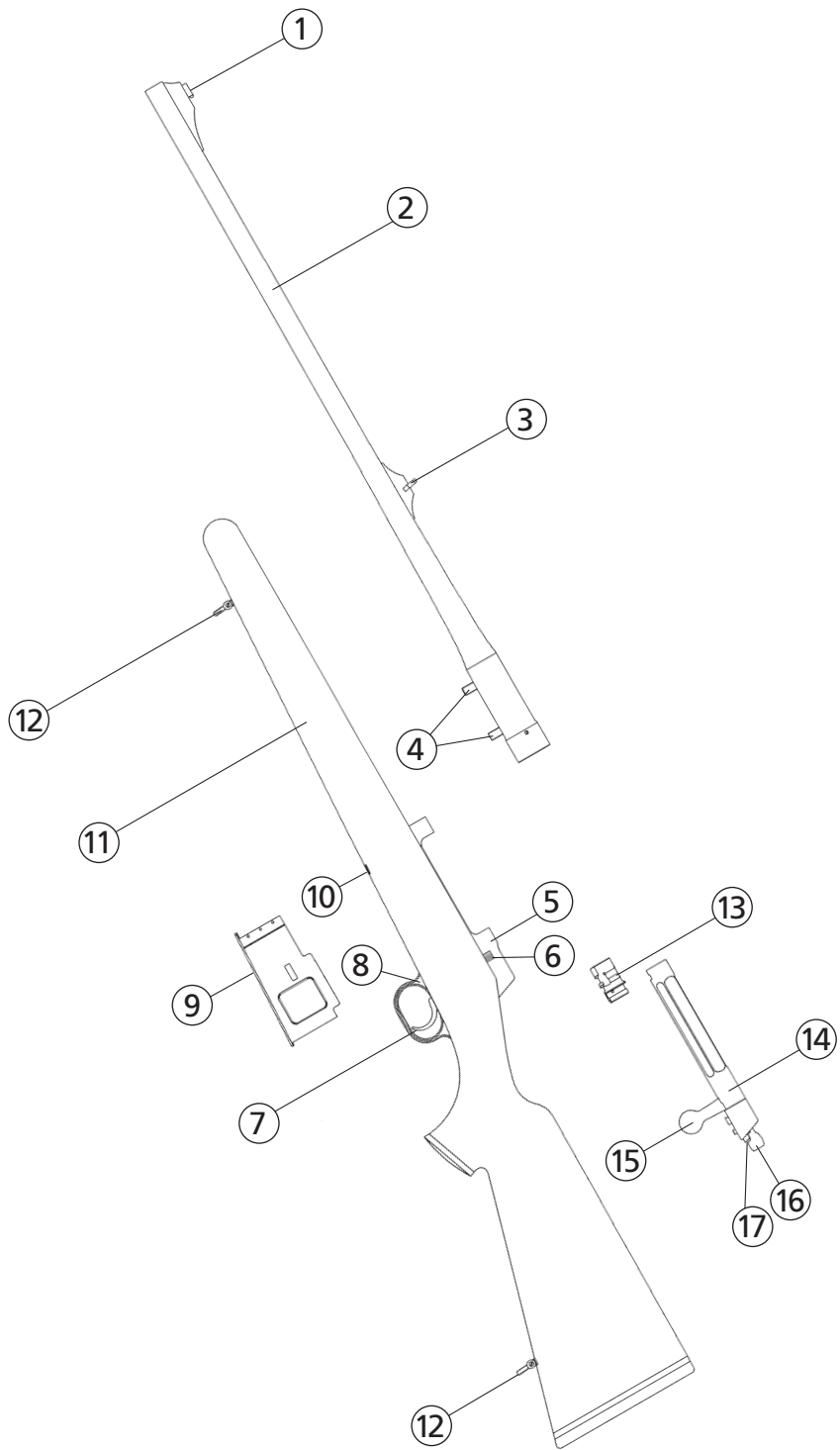


Mauser Jagdwaffen GmbH  
D-88316 Isny  
Germany









## Main rifle components

1	Front Sight	10	Magazine release button
2	Barrel	11	Forearm
3	Rear sight	12	Sling svivel
4	Threaded bolt	13	Bolt head
5	Receiver	14	Bolt
6	Bolt catch	15	Bolt handle
7	Trigger	16	Cocking lever (Safety lever)
8	Trigger guard		
9	Magazine	17	Uncocking button (Safety button)

## Contents

	Page
<b>Main rifle components</b>	1
<b>Safety Rules</b>	2/3
1. Assembly, Disassembly	4
2. Safety and Bolt Lock	5
3. Loading	6
4. Firing	6
5. Unloading	7
6. Removing and Installing bolt	7
7. Exchanging Barrels	8
8. Changing Bolt Head	9
9. Single-Stage Trigger	9
10. Set Trigger	10
11. Open Sights (Adjustable)	10
12. Mounting of Scope	11
13. Care and maintenance	11
14. Warranty conditions	12

## Safety Rules

### CAUTION:

Please read these operating instructions completely, before using the rifle. Only hand on the rifle together with the operating instructions.

**Please ask your specialised dealer for an in-depth explanation of your rifle and instruction in its use, as a supporting measure to these operating instructions.**

### General safety rules for handling firearms

- Ensure that firearm and ammunition never pass into the hands of unauthorised persons.
- Always keep firearm and ammunition separate, in a second unit and inaccessible to unauthorised persons.
- Observe applicable legal provisions for carrying and storing arms and ammunition.
- Familiarise yourself thoroughly with the handling of your firearm and practise all functions and actions with the firearm unloaded, before starting to carry and use it.
- Consider every firearm as loaded and ready to fire, unless you have convinced yourself of the contrary by opening the bolt and checking cartridge chamber (barrel). Even when unloaded, a firearm has to be handled like a loaded firearm.
- During any handling, always hold the muzzle in a direction where you can neither jeopardise nor damage persons or property.
- Before loading the firearm, always check, whether there are oil residues or other foreign matter in the chamber or barrel. Oil residues in chamber or barrel may cause distinct shifts in the point of impact! Foreign matter in the barrel (e.g. water, snow, soil) may cause a detonation of the barrel, leading to severe injuries of the shooter or persons in the vicinity! Ensure that no foreign matter can enter the barrel, also during use!

## Safety Rules

- Only use ammunition which meets the CIP requirements, in particular with regards to the maximum gas pressures  $P_{max}$  according to CIP regulations. Every Mauser rifle is controlled and tested by the state proof-house according to the requirements of the proofing-law and -regulations, using proof cartridges exceeding the maximal allowed gas pressure  $P_{max}$  by a minimum of 30%. If gas pressures exceed proof-level, the safety of the user and/or third parties can no longer be guaranteed. The same applies to cartridge cases, where the seal function is no longer correct through obturation.
- Load your firearm only immediately before use.
- Cock (disengage from safe position) your firearm only immediately before shooting. Hold barrel into a direction out of danger during cocking (disengaging).
- Check the surrounding area, before every shot.
- Point your firearm only at a target, which you have clearly identified.
- Only put your finger on the trigger, when you want to shoot.
- Only fire a shot, when a secure back stop exists.
- When a cartridge fails, wait approx. 60 seconds before opening the bolt, to avoid danger through hang-fire.
- Wear hearing protection during shooting.

### Unload your firearm:

- before crossing obstacles,
- before climbing and leaving raised hides,
- before entering a building,
- before climbing into a vehicle,
- before entering a built up area,
- and also, when you lay down or hand on the firearm temporarily.

# 1. Assembly, Disassembly

## 1.1. Assembly of the rifle

- Insert barrel into rifle, with muzzle pointing upwards.
- Fasten the two barrel fastening screws finger tight with the Torx-key (T 30) provided. Do not use extensions.
- Insert bolt at the back of the receiver, press bolt catch down on the left side and slide bolt all the way in.
- Turn bolt so that bolt catch returns into its original position.
- Insert magazine into magazine well and press it upwards, until it engages with an audible click.

### CAUTION:

Always ensure during assembly, that barrel, bolt head and magazine are appropriate for the respective calibre.

### NOTE:

Always ensure that the barrel channel is clean! Dirt, oil or gun grease between barrel and receiver have a negative effect on the precision of the gun.

## 1.2. Disassembly

- Press magazine release button and remove magazine.
- Push cocking lever (safety lever) slightly to the left with your thumb, at the same time, turn bolt handle upwards and pull bolt back.
- With your left hand, press bolt catch down and pull out bolt.
- Loosen the two barrel fastening screws with the Torx-key (T 30) provided and remove barrel

### LEFT HAND VERSION:

All directions for use also apply to left hand versions of the M03, only mirrored.

# 2. Safety and Bolt Lock

## 2.1. Safety system

The safety system of the Mauser bolt action rifle M 03 is based on an uncocked firing spring. The firing pin spring is cocked with the cocking lever (safety lever) immediately before the shot only and uncocked (secured) again. When repeating, it stays cocked and/or is cocked again.

In its uncocked (secured) position, the bolt handle is blocked as well, in order to prevent unintentional opening of the bolt when moving the rifle.

### CAUTION:

Under no circumstances should you put your fingers into the trigger when cocking (disengaging) or uncocking (locking) your rifle. This would trigger the shot.

### LEFT HAND VERSION:

All directions for use also apply to left hand versions of the M03, only mirrored.

## 2.2. Cocking (disengaging)

- Push cocking lever (safety lever) to the right with the thumb of your right hand, until it locks in the position marked "F".
- A red signalling dot becomes visible on the cocking lever (safety lever).

## 2.3. Uncocking (securing)

- Place thumb on cocking lever (safety lever), simultaneously pressing uncocking button (safety button), until cocking lever (safety lever) jumps back into its uncocked (safe) position.
- The red signalling dot is not visible any longer, the cocking lever (safety lever) is on position "S".

## 2.4. Bolt lock

The bolt lock prevents unintentional opening of the bolt. It becomes active automatically, when the rifle is uncocked (secured) and fully locked.

## 2.5. Opening the uncocked (secured) rifle

- With your thumb, press the cocking lever (safety lever) to the left, over the position "S" all the way to the stop, swivelling the bolt handle upwards at the same time, then pull back bolt in a straight line.

## 2.6. Opening the cocked (disengaged) rifle

- Swivel bolt handle upwards and pull back bolt.

### 3. Loading

The M 03 can be loaded in two different manners:

#### 3.1. Loading with magazine removed

- Uncock rifle (put rifle on "safe")
- Open bolt
- Press magazine release button at the bottom of the action and remove the magazine.
- Place cartridges on magazine and press them downwards into the magazine.
- Insert magazine into magazine well from below, until the magazine release button engages with an audible click.
- Push bolt all the way to the front and lock it. The rifle is loaded now.

#### 3.2. Loading rifle with magazine installed

- Uncock rifle (put rifle on "safe")
- Open bolt
- Place cartridges on magazine and press them downwards into the magazine.
- Push bolt all the way to the front and lock it. The rifle is loaded now.

#### Capacity of magazines:

Magazine	Calibre	Capacity
A	.222 Rem., .223 Rem.	5 Cartridges
B	.243 Win., .308 Win.	5 Cartridges
C	6,5x55, 6,5x57, 6,5x65 RWS, .25-06, .270 Win., 7x64, .30-06, 8x57 IS, 8,5x63, 9,3x62	5 Cartridges
D	.270 WSM, .300 WSM	3 Cartridges
E	7 mm Rem. Mag., .300 Win. Mag., .300 Wby. Mag., 8x68 S, .338 Win. Mag, .375 H&H, .416 Rem. Mag.. .458 Lott	4 Cartridges
E	.404 Jeffery	3 Cartridges

The type of magazine as well as the calibres to be used in it are indicated laterally on the wall of the magazine.

### 4. Firing

#### 4.1. Firing and repeating

- Cock (disengage) rifle by pushing the cocking lever (safety lever) to the right on position "F".
- Sight at target and fire.
- Repeating (reloading): Swivel bolt upwards at bolt handle and pull it back all the way to the stop. Push bolt all the way to the front again and lock it.

#### IMPORTANT:

If the bolt handle is not pushed down all the way to the stop, the cartridge will be unable to ignite, for safety reasons.

#### CAUTION:

As long as the cocking lever (safety lever) is in its cocked (disengaged) position, the firing spring of the rifle will cock automatically with each repetition. When you do not want to continue shooting, uncock (lock) immediately by letting the cocking lever (safety lever) slide backwards.

#### CAUTION:

Always cock (disengage) rifle immediately before firing, at all times. When no shot is fired, uncock (lock) rifle immediately by pressing the uncocking button (locking button). When a shot is fired and the rifle is reloaded (repeated) uncock (lock) rifle immediately by pressing the uncocking button (locking button).

#### LEFT HAND VERSION:

All directions for use also apply to left hand versions of the M03, only mirrored.

### 5. Unloading

#### 5.1. Unloading

- Uncock (lock) cocked (disengaged) rifle as described under 2.3.
- Remove magazine.
- Open bolt as described under 2.5., at the same time, the cartridge is pulled out of the barrel and ejected.
- Remove cartridges remaining in the magazine.

#### With magazine blocked (refer to 5.2):

- Open bolt as described under 2.5., at the same time, the cartridge is pulled out of the barrel and ejected.
- Push cartridges forward with your thumb (or the bolt), until they jump out of the magazine lips. Remove cartridges.
- Check, whether barrel and magazine are empty.

#### 5.2. Blocking magazine release button

- Insert magazine.
- The magazine release button is provided with a bore. Insert the Allen key provided (SW 1.5) into this bore and turn to the right until it reaches the stop (tighten only lightly).

#### 5.2. Unblock magazine release button

- Insert Allen key (SW 1.5) into bore and turn to the left until it reaches the stop (tighten only lightly).
- The magazine may now be removed again by pressing the magazine release button.

### 6. Removing and installing bolt

#### 6.1. Removing bolt

- Pull opened bolt all the way back.
- Push bolt catch downwards and hold it in this position, at the same time, pull out bolt towards the back with your other hand.

#### 6.2. Installing bolt

- Insert bolt at the back of the receiver, press bolt catch down on the left side and slide bolt all the way in. Turn bolt so that bolt catch returns into its original position.

#### LEFT HAND VERSION:

All directions for use also apply to left hand versions of the M03, only mirrored.



## 7. Exchanging Barrels

There are 4 calibre groups. When changing from one calibre group to the other during a barrel exchange, the bolt head has to be changed as well, so that it corresponds to the calibre group of the interchangeable barrel actually mounted.

Please refer to the table for proper allocation of suitable interchangeable barrels. Furthermore, bolt heads and barrels are imprinted with a symbol for the respective calibre group.

These markings have to agree after assembly is completed.

### Calibre groups:

<b>Mini</b>	Stamp <b>MI</b> .222 Rem., .223 Rem.
<b>Standard</b>	Stamp <b>ST</b> .243 Win., 6,5x55, 6,5x57, 6,5x65 RWS, .25-06, .270 Win. 7x64, .308 Win., .30-06, 8x57IS, 8,5x63, 9,3x62.
<b>Magnum</b>	Stamp <b>MA</b> 7 mm Rem. Mag., .270 WSM, .300 WSM, .300 Win. Mag., .300 Weath. Mag., 8x68 S, .338 Win. Mag., .375 H& H., .416 Rem. Mag., .458 Lott
<b>Magnum X</b>	Stamp <b>MX</b> .404 Jeffery

Make sure that a magazine of the corresponding calibre is installed, when performing a barrel exchange. The calibre denominations are marked on the side of the magazine.

### 7.1. Exchanging barrel

- Unload rifle (refer to 5.1).
- Remove scope (refer to 11.2).
- Remove bolt (refer to 6.1).
- Loosen both barrel fastening screws completely, using Torx key. The screws remain in their guide rails and cannot get lost.
- Lift barrel out of receiver.
- Put exchange barrel into its channel inside receiver (Fig. 1.1.).
- Fasten the two barrel fastening screws finger tight with the Torx key.
- Check, whether the calibre group marked on the bolt head ("MI", "ST", "MA", "MX") corresponds with the calibre group of the exchange barrel.
- Make sure that a magazine corresponding with the calibre group of the exchange barrel is used.

#### NOTE:

All left handed bolt-heads have an „L“ alongside the marking for the caliber group.

#### NOTE:

Always ensure that the barrel channel is clean! Dirt, oil or gun grease between barrel and receiver have a negative effect on the precision of the gun.

## 8. Changing Bolt Head

### 8.1. Removing bolt head

- Remove bolt (refer to 6.1).
- Hold bolt in a horizontal position, with the recess pointing upwards (in a right-hand action, the bolt handle will be pointing to the left).

#### IMPORTANT:

Left handed bolt-heads (with "L" marking) always have to be used in left hand versions!

- Press cocking lever (safety lever) over position "S" and remove bolt head by pulling it upwards.

### 8.2. Installing bolt head

- Hold bolt in a horizontal position, with the recess pointing upwards (in a right-hand action, the bolt handle will be pointing to the left).
- Insert bolt head into guide rail and press it downwards, until it engages.

## 9. Direct Trigger

### 9.1. Direct Trigger

The M 03 has been equipped with a crisp single stage trigger.

#### CAUTION:

Please check the trigger regularly for smooth movement, with the rifle unloaded and uncocked (locked). Gummy oil and/or contaminations may affect proper functioning of the trigger and cause malfunctions.

#### LEFT HAND VERSION:

All directions for use also apply to left hand versions of the M03, only mirrored.

## 10. Set Trigger

(not available in the United States)

### 10.1. Set Trigger

Upon request, the M 03 will be equipped with a set trigger unit. The trigger can be set by pushing the trigger blade forwards. This reduces the trigger pull weight considerably.

### 10.2. Setting

- Cock (disengage) rifle (refer to 2.2.).
- Push trigger blade forward, until it engages.
- Set trigger is not in function, when rifle is uncocked (secured).

#### **CAUTION:**

When the trigger blade is pushed too quickly, a shot may be triggered unintentionally!  
When the trigger is set, even minute shocks can cause a shot to be triggered unintentionally!

### 10.3. Resetting set trigger

- Uncock (lock) (refer to 2.3.)
  - automatic reset of set trigger.

#### **CAUTION:**

Incorrect adjustment may cause functional failure of the automatic resetting device. For this reason, it should always be checked again, whether the set trigger has really been reset!

Manipulating the default trigger pull weights set by the manufacturer increases the danger of triggering shots unintentionally!  
For this reason, work of this kind may only be executed by an authorised Mauser dealer.

## 11. Open Sights

(Adjustable)

The Mauser M 03 is equipped with open sights, designed for fast shooting. Front sight and rear sight are adjustable.

### 11.1. Front sight

The point of impact of the shot can be adjusted vertically at the front sight. By turning the screw, which is positioned inside the front sight with the supplied Allen key (SW 1.3) anticlockwise, the point of impact moves downwards, and vice versa.

#### **AFRICA-VERSION:**

Loosen the front sight counter screw on the right hand side of the front-sight-socket with the supplied Allen key (1.3 mm). Then use the supplied Allen key (2 mm) for adjusting the point of impact with the front sight adjusting screw, which is positioned in front of the front sight. By turning the screw clockwise the point of impact goes up and vice versa. After adjusting the point of impact, tighten the front sight counter screw.

### 11.2. Rear sight

The point of impact of the shot can be adjusted horizontally at the rear sight. If this is to be adjusted to the left, first loosen the right-hand screw with the supplied Allen key (SW 1.3) and then tighten the left-hand screw. This causes the rear sight leaf to move to the left side. If the point of impact has to be moved to the right, proceed as above but in opposite direction.

#### **AFRICA-VERSION:**

Loosen the rear sight counter screw in front of the rear-sight-socket with a suitable screwdriver. By pushing the rear sight to the

right, the point of impact changes to the right and vice versa. Please use the scale on the rear-sight-socket for your convenience.

## 12. Mounting of Scope

The Mauser M 03 has been provided with a new mounting system, the Mauser-Double-Square-Mount. The bases are pre-installed on the rifle. We assume that your scope has been mounted correctly on your Mauser M 03 by your specialized dealer.

### 12.1. Installing scope

Swivel both locking levers of the mount backwards. Insert feet of mount into the bases on the receiver. Fasten mount by swivelling locking levers forward.

### 12.2. Removing scope

Open locking levers of mount, one after the other. For this purpose, rotate swivelling head of locking lever forward, until locking device is lifted from the groove. Now turn the entire lever backward. When both levers have been released, the scope can be removed by lifting it upwards.

#### **CAUTION:**

Do not use force!  
Please ensure that the engaging surfaces are clean!

## 13. Care and Maintenance

Only use products for the care of your rifle, which are destined for this purpose.

#### **Barrels:**

Treat exterior and interior of bolt and barrels with a suitable gun oil after shooting, before storing the rifle for prolonged periods of time, and after carrying the rifle, especially in humid or wet conditions. Prior to shooting, barrels and bolt have to be thoroughly de-oiled again. In case of thick deposits of bullet residues, we recommend to use chemical barrel cleaners.

#### **CAUTION:**

Observe instructions and warnings of the care product manufacturer under all circumstances!

#### **Metal parts:**

Keep all metal parts of the rifle which are accessible from outside clean and slightly oiled at all times.

#### **Stock oil is not suitable for metal care!**

#### **Stocks:**

All wooden stocks of Mauser hunting rifles are oil-rubbed. We recommend polishing them regularly with standard stock care products.

#### **Gun oil is not suitable for stock care!**

#### **Optics:**

Please refer to care instructions of the optics manufacturer.

#### **Caution:**

Please have your rifle checked by your specialised dealer prior to each hunting season or hunting trip. Every rifle is a piece of technical equipment requiring regular checks.

## 14. Warranty conditions

### 1. Manufacturer's warranty

Warranty of Mauser Jagdwaffen GmbH is provided in addition to statutory warranty claims by dealers, provided, that the enclosed firearms licence is filled in completely and received by Mauser Jagdwaffen GmbH within ten days after the date of sale. Warranty is provided exclusively for the first purchaser having his residence in the country of purchase.

The warranty applies to the metal and plastic parts of the rifle only, including original Mauser rifle scope mounts, but not the rifle scope. Wooden parts of the rifle require special care and, being natural products, are subject to natural changes. Warranty for wooden parts is excluded.

The warranty period amounts to ten years, starting with the date of sale. It includes any defects of and damages to the rifle (metal and plastic parts), which are proven to be due to faulty material or manufacturing. Within this framework, the manufacturer shall bear the costs for material and working time. For performance of work under this warranty, the rifle has to be returned to the specialised dealer or the production company in Isny.

Risk and costs of transportation of the rifle (outward and return) shall be borne by the customer. Warranty is performed in the discretion of manufacturer by repair or replacement of defective parts; replaced parts pass into manufacturer's property.

### 2. Warranty for gun efficiency

The firing precision of a gun depends on a multitude of factors. The most important factor is the ammunition. Not every barrel fires equally well with every type of ammunition, there may be considerably differences in efficiency. The scope and its mount are of the same importance. Parallax, loose reticles, defects in reticle adjustment and faulty mounting are the most common causes for unsatisfactory gun

efficiency. For these reasons, you should use branded scopes, mounted by a specialist, and you should tune in the ammunition to your rifle by testing several types of ammunition. Ammunition of the same make and charge may exhibit different efficiency and impact point characteristics from one manufacturing run to the other and from one rifle to the other. When the optimum of ammunition, rifle scope and mount were selected, we provide a warranty for the excellent efficiency of our rifles. Complaints regarding gun efficiency have to be brought forward in writing within 20 days after the date of sale. We reserve the right to submit the rifle to an independent institution for verification (DEVA or Staatliches Beschussamt) [government proofhouse]. If excellent gun efficiency is confirmed there, we are entitled to claim the costs incurred for the tests from customer.

### 3. Guarantee exclusion

The guarantee shall be excluded with:

- Damage that is caused as the result of normal wear and tear, with non-observance of the operating instructions or improper use or handling and if the gun shows mechanical damages of any kind.
- Damages that are the result of force majeure or environmental influences
- Repairs, treatment or changes to the gun performed by third parties
- Use of reloaded or non-CIP-permitted ammunition
- Blueing carried out by a third party

The guarantee does not apply for optical sight equipment and telescopic sight mounts of manufacturers other than Mauser Jagdwaffen GmbH. More extensive or other claims, especially those that refer to compensation for damages that go beyond the gun itself (consequential damages) shall be excluded (provided liability is not legally ordered as compulsory).