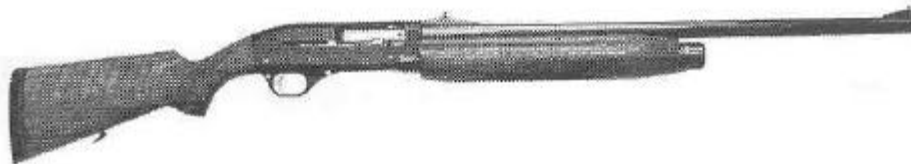

MP153



SEMI AUTO SHOTGUN

European American Armory Corp.
3855 North U.S. Highway One
Cocoa, Florida 32926
(321) 639-4842
www.eaacorp.com
E-mail: eaacorp@bv.net

© Copyright EAA Corp. 4/00

EAA MODEL: MP153 SEMI AUTO SHOTGUN

WARNING AND INSTRUCTION MANUAL PLEASE READ THESE INSTRUCTIONS

MODEL NUMBER	BARREL LENGTH	CALIBERS	FINISH
TYPE MP153	20",24",26",28",30"	12GA / 3.5"	BLUE
S/A SHOTGUN			

GENERAL INFORMATION:

Weight (average) - 28" = 8.5 LBS
Overall Length - 41" TO 52"

FOR YOUR SAFETY AND THE SAFETY OF OTHERS, this owner's manual contains important warnings and safety procedures which must be understood BEFORE using this firearm. Read the entire manual and if you do not understand any part it or the operation of your shotgun, stop and seek professional firearms instructions. You can get a copy of this manual from European American Armory Corp. on request.

Record the serial number of your firearm:

and a description of it:

Make a copy of this manual, proof of purchase/sales record for safekeeping in a secure safe or fireproof container. Such proof is necessary if the firearm is stolen or for warranty repair. Before handling any firearm, make sure you know the safety procedures and most importantly, keep the firearm pointed in a safe direction.

WARNING

****YOU RISK INJURY OR DEATH BY HANDLING THIS FIREARM****

Before handling this firearm, read, understand and follow the instructions in this manual. Always keep this manual with the firearm. If you lend, give or sell this firearm, be sure the manual goes with it. If there is anything you do not understand, seek advice from someone qualified in safe handling of firearms.

WARNING

This firearm should always be transported unloaded in its case.

TYPE OF AMMUNITION TO BE USED

It is suggested that high quality commercially manufactured ammunition be used in this firearm. Some factory ammunition works better than others and you should stick with the brand you find works well in your shotgun. Avoid military surplus or hot loaded ammo. The use of reloaded, high pressure or hand loaded ammunition will void the warranty.

NOTICE

SHOTGUNS ARE CLASSIFIED AS FIREARMS OR DANGEROUS WEAPONS and are sold by European American Armory Corporation with the specific understanding that we are not responsible in any manner what-so-ever for their safe handling or resale under local laws and regulations.

European American Armory shall not be responsible in any manner whatsoever for malfunctioning of the firearm, for physical injury or for property damage resulting in whole or in part from (1) intentional or negligent discharge, (2) improper or careless handling, (3) unauthorized modifications and/or alteration to the internal/safety mechanisms, (4) defective, improper, high pressure, hand-loaded, or reloaded ammunition, (5) corrosion and/or lack of proper maintenance (6) neglect, or (7) other influences beyond our direct and immediate control. This limitation applies regardless of whether liability is asserted on the basis of contract, negligence or strict liability (including any failure to warn). Under no circumstance shall European American Armory Corporation be liable for incidental or consequential damages, such as loss of use of property, commercial loss and loss of earnings or profits.

SAFETY PROCEDURES

1. We recommend that you get competent firearms instruction in safe handling before using this firearm. Please ask your dealer. All guns are extremely dangerous if carelessly handled or used. Remember that the firearm user is the primary "safety" and to depend on any mechanical devices is to be only half safe.
2. This firearm will fire if a cartridge is in the chamber and the trigger is pulled and the safety is disengaged.
3. DO NOT LOAD THIS SHOTGUN UNTIL YOU UNDERSTAND HOW THIS SHOTGUN OPERATES. KEEP this shotgun unloaded at all times except when ready to fire and you are sure of your target.
4. ALWAYS carry this shotgun in a case or original box unloaded.
5. NEVER point this shotgun at anything that is not your intended target even if this shotgun is unloaded. When loading, cleaning, unloading or handling, always be sure the muzzle is pointed in a safe direction and always keep your finger off the trigger.
6. NEVER assume any gun is unloaded. Before handling, check to make sure the chamber is empty. See unloading Instructions and then unload any ammunition. Make sure you know that this or any firearm is fully unloaded before displaying or handling it. When handling any firearm, keep your fingers

away from the trigger at all times until you intend to fire.

7. **WARNING:** The actual firearm does not contain any lead; however, it does fire ammunition containing lead or lead compounds known to the State of California to cause cancer, birth defects, reproductive toxicity, and other serious physical injury. Those who discharge a firearm, stand near someone who discharges a firearm or cleans firearms are hereby warned of the dangers presented by lead and lead compounds and should take protective health measures. Avoid exposure to lead while handling and wash your hands after contact. Proper air ventilation is absolutely necessary when shooting indoors.

AMMUNITION WARNING

Old, Hot-loaded and/or re-loaded ammunition may be dangerous. Because of the poor or nonexistent quality control standards among some companies or people who make reloaded ammunition and the dangers of overloads and under loads (squib loads) which may occur, we recommend that only good quality new factory ammunition be fired in our firearms. [If you prepare your own hand loads, do NOT exceed recommended pressures in line with those generated by standard factory loads as manufactured by Remington, Winchester, Federal, PMC or other reputable companies.] Old ammunition may not fire with sufficient force to expel the projectile from the barrel.

READING THESE SAFETY RULES WILL SAVE YOUR LIFE OR THE LIFE OF SOMEONE ELSE

Get instructions from a competent firearms instructor before using this or any firearm. Learn from a professional how to handle, load, unload, operate, fire and care for your gun.

NEVER PLAY with your firearm. It is not a toy and can be a very dangerous weapon that can cause serious personal injury or death.

Always keep the gun pointed in a safe direction. Treat every gun as if it is loaded...all the time. **NEVER** point any firearm (loaded or unloaded) at any person or anything you do not intend to shoot. Always keep your gun unloaded until ready to use and make sure that it is unloaded before cleaning.

Keep your finger **OFF** the trigger until you are actually aiming at the target and ready to shoot. Learn to rest your finger outside of the trigger guard.

Never rely on a gun's "safety" to protect you from unsafe gun handling. A safety is only a mechanical device, not a substitute for common sense and gun safety procedures.

Never leave a gun unattended or where it could fall and fire.

Store guns and ammunition separately **beyond the reach of children**. Make sure that they are properly secured so untrained individuals and children will be denied access to your guns and ammo.

Test your gun's operation and safeties only at a shooting range while the firearm is pointed in a safe direction.

Know your target and what is beyond. Ask yourself what your bullet will hit if it misses the target or passes through the intended target. Remember, a fired projectile can travel over a mile (including a ricochet) and is capable of going through walls.

Guns and alcohol or drugs do not mix. Don't take any alcoholic beverages and/or drugs before or during shooting activities.

Never pull a gun toward you by the muzzle. Don't climb a tree, cross a ditch or fence with a loaded gun.

Always empty guns before entering a house, car, truck, boat, RV, camp or any building.

When receiving a gun, always open the bolt and check to make sure the chamber is unloaded.

NEVER accept anyone's word that a gun is "unloaded" or "empty". You should immediately open the action and check to make sure it is unloaded.

Be careful with ALL ammunition. Even "blank" cartridges are deadly at close range due to the muzzle blast. Make sure your ammunition is in new and in good clean condition. Do NOT oil or grease ammo as this may damage the cartridge primer. Do NOT tamper with or alter the standard factory ammunition.

Keep firearms unloaded when not actually in use. Load the gun only when on the range preparing to fire and unload it before leaving the range.

Never put your hand over the muzzle of a gun.

ALWAYS WEAR protective shooting glasses and hearing protection when using firearms.

Spectators should be at least 10 feet behind and away from the shooter while the shooter is loading, shooting and unloading. Spectators should wear protection for hearing and sight loss and they should avoid distracting those shooting their firearms.

Never drop your gun. If you do drop it, unload it and check it for proper function before using it again.

Do NOT alter or modify your gun. Don't try to change your gun's trigger pull, because it may affect sear engagement and thereby cause accidental firing.

Do NOT remove any internal safety or safety device on the firearm. Safety mechanisms are designed to protect you from injury or death.

Do maintain and keep your gun clean. Keep in a dry place away from other metals and water. If your gun shows sign of corrosion or improper operation, have it serviced by a competent gunsmith.

Keep the muzzle pointed in a safe direction when loading and unloading your gun. Never point the muzzle at anyone.

Never shoot at hard flat surfaces or water....bullets ricochet.

If a gun fails to fire when the trigger is pulled, keep it pointed down range at the target for 60 seconds. Sometimes slow primer ignition will cause a "hang fire" and the cartridge will go off after a short pause. If it still fails to fire, keep muzzle pointed in safe direction and avoid exposure to the breech, as you attempt to unload your firearm.

Never let water, snow, mud or other material enter the barrel. Always be sure the barrel is free of any obstruction.

Since many ammunition identifications sound similar, be sure that you use only the correct ammunition for your gun. Do NOT use the wrong size or wrong strength ammunition in your firearm.

Repeated and prolonged exposure to gunfire may cause toxic levels of lead in your body. High levels of lead in the blood may result cancer, impotency, birth defects and other serious physical injury. When shooting indoors, make sure there is proper fresh air ventilation.

Teach children: 1. NOT to touch guns, bullets, cartridges, shells, flares or any explosive device and 2. If they discover such a dangerous item or weapon, they must immediately report its location to their parents, school teacher and police.

Remember a firearm has the capability of taking your life or the life of someone else. Be careful with your firearm -- an accident is almost always the result of not following basic safety rules.

HOME SAFETY IS PROBABLY YOUR BIGGEST CONCERN. We suggest a gun lock such as Master Gun Locks. They work on most firearms and are available in gun shops and sporting goods departments. For more information write: Master Gun Locks; Master Lock Company, P.O. Box 10367, Milwaukee, WI 53210. You have invested this much in your new firearm, now invest a little more in your family's safety.

USED FIREARMS - If you got your European American Armory firearm as a used gun, BEFORE USING IT you should unload it and check all its functions to be sure it works correctly. Firearms are some times altered to work incorrectly, or parts may be removed, lost or replaced with incorrect parts. First, unload it and check it yourself and then take it to a good gunsmith who knows European American Armory firearms, and have him examine it.

WRITE US concerning any items or circumstances which you don't understand and which might relate to your safety and the operation of your firearm.

WARNING

BEFORE LOADING or firing a shotgun, examine the bore and the firing chamber to be certain they are clean and free of any obstruction. Even a heavy coat of oil, grease, snow or water may result in damage to the firearm and injury to the shooter and/or persons near the firearm. A misfire or unusual sound upon firing is a signal to cease firing and to examine the chamber and bore. If there is any obstruction, clear the obstruction and clean the bore and chamber before firing.

FIRING WARNING

When shooting, full eye and ear protection is mandatory at all times. Shooters and spectators must wear shooting glasses and sound suppressor to prevent eye injury and hearing loss. Vision loss and hearing impairment can occur with only one moment of non-protection.

WARNING

Any bore obstruction, even if it is only partly blocked, may cause the gun to blow up if it is fired, or may cause damage to the gun such as a bulged barrel. To avoid injury or death to the shooter or bystanders, check the barrel before shooting or if a shot does not sound normal.

WARNING

Always keep the muzzle pointed in a safe direction! Never attempt to load or unload any firearm inside a vehicle, building or other confined space (except a properly constructed shooting range). Enclosed areas frequently offer no completely safe direction in which to point the firearm. If an accidental discharge occurs, there is great risk of injury or property damage. Before loading, always clean all, grease and oil from the bore and chamber, and check to be certain that no obstruction is in the barrel. Any foreign matter in the barrel could result in a bulged or burst barrel or other damage to the firearm and could cause serious injury to the shooter or to others.

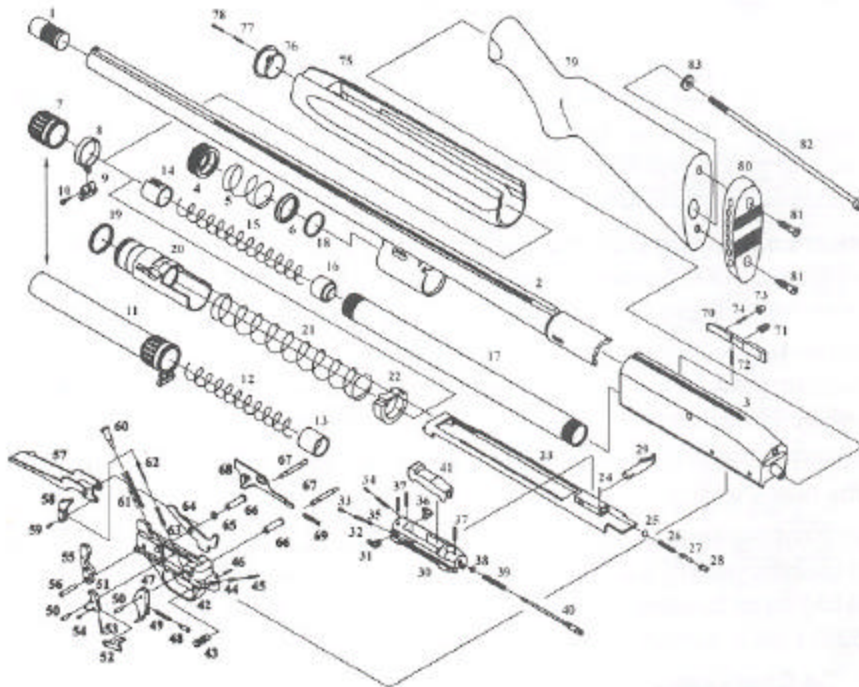
WARNING

If there is any reason to suspect that a bullet or projectile is obstructing the barrel, immediately unload the firearm (See Unloading Instructions) and check the chamber and the bore. A bullet may be lodged some distance down the barrel where it can not easily be seen. Check the bore by using a cleaning rod to pass through the barrel. If a blockage is in the bore, **DO NOT ATTEMPT TO SHOOT IT OUT WITH ANOTHER CARTRIDGE, OR BLOW IT OUT WITH A BLANK CARTRIDGE OR A CARTRIDGE FROM WHICH THE BULLET HAS BEEN REMOVED. SUCH TECHNIQUE(S) CAN GENERATE EXCESSIVE PRESSURE, DAMAGE THE FIREARM AND CAUSE SERIOUS PERSONAL INJURY.** If the blockage can be removed with a cleaning rod, clean any unburned powder grains from the bore, chambers & mechanism before resuming shooting. If the blockage can not be dislodged by tapping it with a cleaning rod, take the firearm to a gunsmith.

WARNING (Mechanical Malfunctions)

STOP SHOOTING IMMEDIATELY AND UNLOAD YOUR FIREARM if your firearm develops: a mechanical malfunction; binding or stoppage; spitting powder/gas; a cartridge primer is punctured; a cartridge case is bulged or ruptured; or the sound on firing does not sound quite right. Do NOT try one more shot but unload your firearm and take it and the ammunition to a qualified gunsmith or send it back to EAA for examination. Do not assume that the shotgun is empty merely because you checked the chamber. You must also check the bore for any fired shot or wad jammed inside the barrel.

MP153 Part List



- | | | |
|-------------------------------------|--|-----------------------------------|
| 1. Choke tube | 29. Bolt cocking handle | 57. Carrier latch |
| 2. Barrel | 30. Bolt | 58. Carrier latch dog |
| 3. Receiver | 31. Left extractor | 59. Carrier latch dog pivot |
| 4. Gas cylinder nut | 32. Left extractor spring | 60. Hammer plunger |
| 5. Valve spring | 33. Left extractor plunger | 61. Main spring |
| 6. Valve | 34. Right extractor plunger | 62. Carrier latch dog plunger |
| 7. Forend cap | 35. Right extractor spring | 63. Carrier latch spring |
| 8. Sling swivel band | 36. Right extractor | 64. Disconnecter |
| 9. Sling swivel ring | 37. Firing pin retaining pin | 65. Disconnecter busing |
| 10. Sling swivel screw | 38. Firing pin retractor spring washer | 66. Pin tube |
| 11. Magazine tube extension | 39. Firing pin retractor spring | 67. Trigger housing retaining pin |
| 12. Magazine tube extension spring | 40. Firing pin | 68. Carrier stop catch |
| 13. Magazine tube extension insert | 41. Locking block | 69. Carrier stop catch spring |
| 14. Magazine spring retainer | 42. Trigger housing | 70. Shell stop |
| 15. Magazine spring | 43. Safety | 71. Shell stop spring |
| 16. Magazine follower | 44. Safety plunger | 72. Shell stop pivot |
| 17. Magazine tube | 45. Safety spring | 73. Bolt release button |
| 18. Internal seal | 46. Pin | 74. Bolt release button spring |
| 19. External seal | 47. Trigger | 75. Forend |
| 20. Piston / Action bar sleeve | 48. Trigger plunger | 76. Cap retaining pin bushing |
| 21. Recoil spring | 49. Trigger spring | 77. Cap retaining pin spring |
| 22. Forend support | 50. Pivot | 78. Cap retaining pin |
| 23. Action bar assembly | 51. Sear | 79. Buttstock |
| 24. Pin | 52. Trigger bar | 80. Buttplate |
| 25. Bolt cocking handle detent ball | 53. Sear spring | 81. Buttplate woodscrew |
| 26. Spring | 54. Trigger bar pivot | 82. Buttstock screw |
| 27. Plunger | 55. Hammer | 83. Buttstock washer |
| 28. Bushing | 56. Hammer pivot | |

External Control Parts:

Cross Trigger Block Safety: Located on trigger housing behind trigger, push button style. When red ring is exposed shotgun will fire if trigger is pulled!! Do not disengage safety unless you are ready to fire shotgun. (Safety Engaged - The red ring is not showing and the trigger is blocked from full travel; Safety Disengaged - The red ring is showing and the trigger has full travel...MAKE SURE YOU UNDERSTAND HOW THE SAFETY WORKS BEFORE YOU LOAD OR USE THE SHOTGUN)

Carrier Latch / Bolt Release Button: Located on right hand side of shotgun, protrudes out of forward right hand side of the receiver. Pushing in the button will release the carrier latch as well as release the bolt if it is in the rearward position.

Carrier Latch: Located under the receiver in front of the trigger guard. Depressing the carrier latch button will release the lock on the latch so that it can be moved for loading.

Trigger: Located in the trigger guard with safety disengaged and trigger pulled to the rear shotgun will discharge.

Bolt Cocking Handle: Located on right hand side of shotgun protrudes from bolt used for pulling the bolt rearward. Note: If the gun has been cocked and the bolt has been released to the forward position the bolt will not lock back in the rearward position unless the Carrier Stop Button has been moved rearward.

Forend Cap: Located on end of magazine tube at the front of the forend and under the barrel. Screws onto magazine tube right hand thread (WARNING CAP UNDER SPRING PRESSURE).

Carrier Stop Button: Located on the right hand side of receiver at the forward end of the trigger housing. This is a flat button that moves for and aft and resets the bolt catch and locks the carrier latch in the down position.. If the gun has been cocked the bolt will not lock back unless this button has been pushed rearward. This button also locks the carrier latch in the downward position.

INFORMATION FIGURES (Direction for Assembly)

Fig 1: When you open the box of your new MP153 shotgun the barrel is separated from the main portion of the shotgun. To attach the barrel first remove the stock and receiver from the plastic bag. Then unscrew forend cap.



Warning the magazine the magazine cap is under spring pressure. Note: After assembly of the shotgun the spring in the magazine tube may become twisted. This will cause a decrease in magazine tube capacity. If you load and unload the magazine tube the spring will untwist and the capacity should be as defined in the manual.

If the plastic spring cap is not installed in the magazine tube then use small pin in the hole in the end of the magazine tube to hold the spring during removal of the cap...Simply unscrew the cap until you see the hole in the tube, insert pin thru hole to hold spring.

Fig 2: Remove forend from magazine tube

Fig 3: Depress the Carrier Stop Button.

Fig 4: Now remove the barrel from the box and remove the plastic bag from the barrel. Insert the barrel extension into the receiver (between the bolt and the receiver) while making sure the barrel lug is aligned with the magazine tube. Continue sliding the barrel extension into the receiver and allow the barrel lug to slide over the magazine tube. With the barrel extension partially inserted into the receiver between the bolt and the receiver, pull the bolt cocking handle to the rear so that the bolt is locked back. Now completely insert the barrel extension into the receiver.



GAS SYSTEM WASHER PLACEMENT:

You must place the gas system washer in front of the barrel lug. Thus the gas system washer is between the barrel lug and the forend as pictured. (Fig. A)

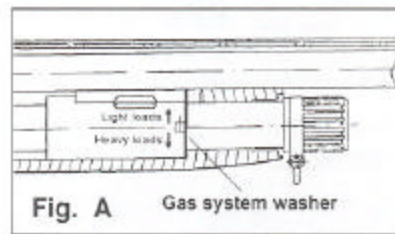


Fig 5: Slide the forend over the magazine tube (do not force). Make sure that the forend is completely seated around the magazine tube, barrel, and the receiver (note: the forend must seat flush with the receiver).

Fig 6: Screw on the forend cap so that the forend is held firmly in place and flush against the receiver.



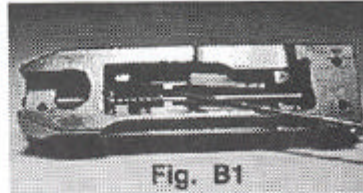
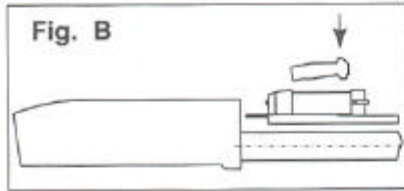
With the forend in place and the barrel in place and the forend cap securely in place, depress the carrier latch button and the bolt will slide into the barrel extension (Note: If you see any portion of the barrel extension protruding from the receiver after you released the bolt or if there is a gap between the forearm and the receiver you have not properly assembled the shotgun). If the bolt does not slide forward or you have gaps or the barrel extension protrudes from the receiver, reverse the assembly procedures and start over again making sure that the barrel is fully inserted into the receiver and that the forend is fully in place. If you still can not assemble the shotgun correctly take the gun to the dealer where you bought the gun or a qualified gunsmith for help.



Once the shotgun is assembled or if you can not fully assemble the shotgun and plan to carry it somewhere for help, activate the cross trigger block safety and keep it activated until you are ready to fire the shotgun. (Keep the safety on no matter if the gun is loaded or unloaded).

LOCKING BLOCK PLACEMENT:

During assembly or reassembly make sure the locking lug is placed as pictured (Fig B). Make sure that the firing pin and firing pin washer are held rearward by the locking lug (Fig B1).



Screw in Chokes Symbols / Markings

The end of the chokes are marked with slashes to determine choke

//// - Extra Full	/ - Full
// - Improved Modified	/// - Modified
/// - Improved Cylinder	CI - Cylinder

BEFORE INSTALLATION OF A CHOKE TUBE MAKE SURE THE SHOTGUN IS UNLOADED.

The chokes are right hand thread. Make sure that you do not cross thread the choke. For tightening of a choke tube use a special wrench which completes your shotgun.

WARNING! MAKE SURE YOU FULLY TIGHTEN THE CHOKE TUBE
Shooting with loosed choke tube can cause its damage or damage of your shotgun.

Look into the muzzle. The ring at the coupling the bore with the choke tube where the surface of the barrel bore overhand the surface of the choke tube channel should be visible. The distortion of the ring may indicate the damage of the choke tube or housing in the barrel.

PERIODICALLY, CHECK TO INSURE THE TUBE IS FULLY SEATED IN THE BARREL.

After use remove the choke tube and clean the choke tube threads and location in the barrel where the choke tube thread into. Only use choke tube lube for lubrication. Only use IC choke tube with slug.

REMEMBER the choke tubes and the location in the barrel need careful handling for prevention of casual deformation at the thin-wall sections. Needlessly do not leave a barrel without a choke tube being in place.

If you would like to buy extra choke tubes (skeet, trap, extra full, etc.) call; Colonial @ 1-800-949-8088

DIRECTION FOR DISASSEMBLY

Make sure the gun is unloaded and pointed in a safe direction. Make sure the safety is on. There is no excuse for not being careful.

Fig 7: With the bolt in the forward position unscrew the



forend cap and remove the forend (WARNING CAP UNDER SPRING PRESSURE). Push the Carrier Stop Button rearward then move the bolt to the rear slightly and hold it out of battery, then grasp the barrel and remove the barrel by pulling the barrel and barrel extension out of the receiver.

Fig 8: Use the back end of a empty cartridge or a flathead screwdriver or your fingers to remove Bolt Cocking Handle. Insert screwdriver or back of empty cartridge into notch and pry up handle and remove from bolt or grasp handle firmly and pull out away from receiver.



Fig 9: With the cocking handle removed from the bolt you now can grasp the gas piston and slide the bolt and action bar forward and remove the assembly from the magazine tube and receiver. Be careful because once the bolt is removed from the receiver all the pieces from the assembly are free to separate. We suggest you keep the gun with the **bolt up** when you remove the assembly so the assembly does not separate. See locking block placement section.



Fig 10: The trigger assembly can be removed with the barrel and bolt removed or without the barrel and bolt removed. To remove the trigger assembly all you do is remove the two pins that hold the trigger assembly in place and pull the trigger assembly from the receiver. The pins can be removed with a hammer and a punch.

TO LOAD YOUR SHOTGUN

- * Make sure the shotgun is pointed in a safe direction at all times, the safety is engaged, and never allow fingers or objects to contact trigger.
- * Do not load shotgun until you are ready to fire
- * Do not disengage the safety until you are ready to fire.
- * Make sure the ammo that you are using is the correct size and gauge. The barrel is marked with the gauge and chamber size, barrels marked 3.5" will also use 2 3/4" or 3" or 3.5" shot shells.
- * Visually inspect the chamber for obstructions by pulling back the bolt until it locks back (note: if the bolt will not lock back then push the Carrier Stop Button rearward and retry locking the bolt rearward) the chamber should be free of oil or grease or obstructions... The chamber is the rear portion of the barrel where the cartridge slides into from the pressure applied by the bolt. After inspection release the bolt by depressing the carrier latch button.

Fig 11: Turn the shotgun upside down so that the barrel is pointing toward the ground and you are looking at the carrier latch. Now depress the carrier latch button and insert up to (5) - 2 3/4" cartridges or (5) - 3" or (4) - 3.5" cartridges in to the magazine tube. Note: If plastic spring cap is in magazine tube then all capacities are decreased by one round.



****WARNING****

Never load a cartridge into the chamber until you are ready to fire the shotgun...

Fig 12: Turn the gun upright with the barrel pointing to the ground and pull back the bolt cocking handle until a cartridge moves up into the ejection port. Now release the handle and the cartridge will be carried by the bolt into the chamber.



TO FIRE YOUR SHOTGUN

****WARNING****

- * During firing, the bolt cocking handle travels reward with considerable force and velocity. Do not allow any object to enter its' path.
- * Do not disengage the safety until the shotgun is pointed in a safe direction and you are ready to fire
- * Semi-auto shotguns automatically feed the next live round from the magazine tube into the chamber each time the gun fires. No mechanical force is required for the shotgun to complete the-chambering operation. Note: You must be aware that the firearm will be ready to fire another round after the previous round has been ejected and the new round has been chambered.
- * After the last round has been fired the shotgun should lock open, never count on the locked back bolt as a signal that the gun is empty (Visually check the chamber). It is also possible that the bolt will not lock back after the firing of the last cartridge. If this occurs, open the bolt manually and lock it to the rear (note: if the bolt will not lock back then push the Carrier Stop Button rearward and retry locking the bolt rearward) Use your eyes to verify that the gun is empty.
- * If a cartridge does not fire and the trigger has been pulled and the safety is disengaged... Stop! and do the following: a) Make sure the gun is pointed in a safe direction b) Engage the safety c) Wait 60 seconds d) Follow the instruction below for unloading the shotgun
- * If during firing the sound of any cartridge is noticeably softer or louder than the previous cartridge fired, Stop! Do not load another cartridge or fire another cartridge and do the following:
 - a) Make sure the gun is pointed in a safe direction b) Engage the safety c) Follow the instruction below for unloading the shotgun d) With the shotgun unloaded visually inspect the shotgun for barrel blockage or damage and inspect the mechanical portion and receiver of the shotgun for damage before continuing.

**PLEASE READ AND UNDERSTAND ALL WARNINGS IN THIS
MANUAL BEFORE FIRING SHOTGUN, MAKE SURE YOU KNOW
WHAT YOU ARE SHOOTING AT**

- 1) Make sure the gun is pointed in a safe direction and that you are **wearing ear and eye protection.**
- 2) Engage safety if not already engaged

3) Disengage the safety and begin firing only when you are ready to fire and the shotgun is pointed in a safe direction to be fired

GAS SYSTEM ADJUSTMENT:

Your MP153 has a unique self regulating gas system and is pre set at the factory to function with 12ga 2 3/4" (1 1/4 oz) to 12ga 3.5" (steel shot). This system also allows you to fine tune the function of the gun with the gas system nut. So, by adjusting the gas system nut you can make your gun function over the complete range of 12 ga ammunition and set the gun for optimum function for the user. Simply the gas system nut allows you to customize the function of the gun to your requirements without additional parts or kits (unlike our competition)

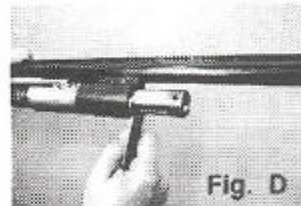
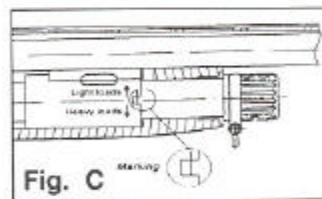
Gas cylinder nut: Located under the barrel on the front end of the gas cylinder and retains the valve spring with the valve which provide the action of the shotgun with light loads as well as with heavy loads.

Note: For the first 100 rds use loads 1 1/4 oz. or greater.

Your gun was set at the factory to use 12 ga. / 3.5" steel shot to 12 ga. / 2 3/4" (1 1/4 oz.). If you wish to use lead shot 12 ga. / 3.5" rounds then you must adjust the Gas cylinder nut two turns counter-clockwise. If you wish to use loads lower then 12 ga. / 2 3/4" 1 1/4 oz. you must adjust the Gas cylinder nut as required (clockwise).

Never adjust the Gas cylinder nut more than two complete turns in any directions. (For reference use notch on front of the Gas cylinder: the nut should be visible through the notch and at most should fit flush the front end of the Gas cylinder.) To set the gun back to factory setting see mark on Gas cylinder and adjust as required. (Fig. C)

Note: Screw the Gas cylinder nut not detaching the barrel from the receiver. (Fig. D)



To Unload Shotgun

1) Make sure that gun is pointed in safe direction and engage safety, if not already engaged. Never allow your finger or any object to come in contact with the trigger during the unloading operation...

Fig 13: Draw back the bolt until a cartridge is ejected or the bolt has traveled to the rear fully (If there was not a cartridge in the chamber nothing will be ejected) slide the bolt forward until it is fully closed. Now draw back the bolt until a cartridge is ejected. Repeat the drawing back of the bolt until no more rounds are ejected.



Now lock the bolt in the rearward position. (Note: You must move the Carrier Stop Button rearward for the bolt to lock in the rearward position) With the bolt locked back visually inspect the chamber to assure that it is empty, you should also look down into the receiver through the ejection port and verify that the magazine tube is empty.

If for some reason the cartridge in the magazine tube will not rise up into the chamber after repeated attempts to manually cycle the shotgun, perform the following steps:

A) Manually close the bolt

B) Turn over the shotgun so that the trigger guard is facing you (upward), depress the carrier latch button and then depress the carrier latch.

C) With the same finger that you are depressing the carrier latch depress the shell stop (the shell stop is located on your left hand side with the gun in the upside down position, it is the piece of metal that should be holding the round in the magazine tube) and the cartridge should slide up and out of the shotgun with your guidance. Note: the cartridge is under spring tension. Repeat this process till the magazine tube is empty and then turn the gun over and lock the bolt back and verify that the gun is totally empty.

If you had to follow the procedure for a cartridge not being released from the magazine tube, make sure the gun is empty and let a qualified gunsmith inspect the gun before you load or use the gun again.

MANUFACTURER'S WARNING

This firearm was manufactured to properly perform with the original parts as designed. It is your duty to make sure any parts you buy are correctly installed and that neither replacements nor originals are altered or changed. Your gun is a complex tool with many parts that must relate correctly to other parts for safe and accurate operation. Putting a gun together wrong or with modified parts can result in a damaged gun, injury or death to you or others through malfunction. Always let a qualified gunsmith work on your gun or at least, check any work not performed by a gunsmith. Firearms safety is your primary concern. **THE GUN OWNER MUST ACCEPT FULL RESPONSIBILITY FOR THE CORRECT REASSEMBLY AND FUNCTIONING OF THE FIREARM AFTER ANY DISASSEMBLY OR REPLACEMENT OF PARTS.**

DUCK PLUG PLACEMENT:

The wooden rod enclosed with your shotgun is a duck plug and can be placed inside the magazine tube spring from the cap end. Simply the rod prevents the magazine follower from moving the full length of travel.

It is preset for one round in the magazine without the plastic spring cap. You will see a mark on the rod which is where you would cut the rod if you want two rounds in the magazine without the plastic spring cap. If you want to use the plastic spring cap and the duck plug you will have to cut the rod at the mark.

CLEANING AND MAINTENANCE OF SHOTGUN

- A) Follow procedures for unloading shotgun as described previously
- B) Follow procedures for disassembly of shotgun as described previously

1. Materials needed to clean this shotgun are: a cleaning rod, cotton bore patches, brass bore brush, powder solvent, a small soft brush and good quality gun oil.

WARNING: Lead or lead compounds are known to the State of California to cause cancer, birth defects, reproductive toxicity, and other serious physical injury. Those who clean firearms should take protective measures to avoid contact or exposure to such chemicals.

2. Using the bore brush with powder solvent scrub the barrel and chamber to remove any powder and lead residue in the bore. Always and lastly, swab with cotton patch with gun oil to coat and protect the bore and chambers from rust and corrosion.

3. Any powder fowling on the firing wall, barrel, etc. can be easily cleaned with a brush and powder solvent.

5. All external surfaces should be wiped down with light coat of rust preventative. Avoid using too much oil as dust and/or debris can get trapped in the oil creating a gum that in time will cause misfires.

6. CAUTION in using solvents in gun bore cleaning. Prolonged or excess contact with finish or bluing can damage the gun's finish. Be sure to wipe away all excess solvent and then lubricate with oil.

7. A gun should be cleaned after firing. In addition, external parts should be wiped with an oiled cloth after handling. A light oil is ordinarily all that is necessary in cleaning if the gun has not been fired or fired very little. If a gun is used frequently, it must be cleaned after each firing and regularly serviced by a professional gunsmith. If the gun has been stored, remove all excess oil and/or grease before firing. Always check to be sure that no cleaning patch or other obstruction remains in the bore or chambers before firing.

Fig 14: Pictures the two holes in the barrel gas porting ring which must remain open and clear for the shotgun to function properly. Make sure these two holes are cleaned after each use as well as clean the barrel gas porting ring.



Fig 15: Pictures the gas piston assembly on the magazine tube. These parts must be cleaned and lightly oiled after each use.



DANGER -- AMMUNITION WARNING

Firearms may be damaged and serious injury or death to the shooter or bystander may result from any condition which contributes to the generation of excessive pressure or uncontrolled release of gas within the firearm. Such adverse conditions can be caused by bore or chamber obstruction, propellant

powder overloads or by defective, incorrect or improperly loaded and assembled cartridge components. Even the strongest firearm can be blown up as a result of excessive pressure. It is extremely dangerous to use a cartridge whose pressure is greater than that developed by cartridges loaded to industry standards.

AMMUNITION (CARTRIDGES) NOTICE

We specifically disclaim responsibility for any damage, injury or death occurring in connection with or as the result of the use of European American Armory shotguns of faulty, non-standard, re-manufactured, hand loaded or reloaded ammunition, used cartridges or cartridges other than factory cartridges for which the firearm was originally chambered.

LUBRICATION WARNING

Firing a shotgun with oil, grease or any other material even partially obstructing the bore may result in damage to the shotgun and injury to the shooter and those nearby. Do not spray or apply lubricants directly on ammunition. If the powder charge of a cartridge is affected by the lubricant, it may not be ignited, but the energy from the primer may be sufficient to push the bullet into the bore where it may become lodged. Firing a subsequent bullet into the obstructed bore will damage the shotgun and may cause injury to the shooter and those nearby. Use lubricants properly. You are responsible for the proper care and maintenance of your firearm and ammunition.

ONE YEAR LIMITED WARRANTY

All European American Armory Corp. firearms are warranted to the original retail customer for one year from date of purchase against defects in material and workmanship. All parts and labor or replacement **at our option** are covered. Wood Stock and Wood Forend are not covered by the One Year Limited Warranty. The warranty on the wood stock and forend is 60 days from purchase and only covers manufactured and material defects.)

Transportation to and from our repair facilities, damage caused by failure to perform normal maintenance, sales outside the United States, damage due to use of high velocity, high pressure, reloaded or other nonstandard ammunition, or any unauthorized repair, modification, misuse, abuse, fanning the hammer or alteration of the product is not covered by this Limited Warranty.

Any implied warranties, including the implied warranties of merchantability and fitness for a particular purpose, are limited to one year from date of original retail purchase. Consequential or incidental damages and/or expenses, or any other expenses are not covered by this warranty.

To obtain warranty performance send your firearm, freight prepaid, with proof of retail purchase and \$10.00 dollars for return freight to:

European American Armory Corp.
3855 North U.S. Highway One
Cocoa, Florida 32926

 **WARNING** 

Children are attracted to and can operate firearms that can cause severe injuries or death.

Prevent child access by always keeping guns locked away and unloaded when not in use.

If you keep a loaded firearm where a child obtains and improperly uses it, you may be fined or sent to prison.

 **ADVERTENCIA** 

A los niños los atraen las armas de fuego y las pueden hacer funcionar. Ellas pueden causarse lesiones graves y la muerte.

Evite que los niños tengan acceso a las armas de fuego guardándolas siempre con llave y descargadas cuando no las está utilizando.

Si usted tiene una arma de fuego cargada en el lugar en que un niño tiene acceso a ella y la usa indebidamente, la pueden dar una multa o enviarle a la cárcel.

WARNING

Altering or modifying parts and/or internal safeties is dangerous and will void the warranty. This shotgun was manufactured to perform properly with the original parts as designed. It is your duty to make sure any parts you buy are made for this firearm and are installed correctly and that neither the replacements nor originals are altered or changed. Your gun is a complex precision tool with many parts that must relate correctly to other parts in order for proper and safe operation. Putting a gun together wrong or with incorrect or modified parts can result in a damaged gun, danger, and injury or death to you and others through malfunction. Always have a qualified gunsmith work on your gun or at least check any work not performed by a gunsmith.

YOUR OWNERS' MANUAL

Always keep this manual with your firearm. Make sure you understand all the warnings, operation instructions and safety procedures. When you lend, give or sell the firearm, be sure this manual goes with it. You can get a copy of this manual from European American Armory on request.

ALL PARTS ORDERS ARE SUBJECT TO A \$10.00 CHARGE FOR SHIPPING AND HANDLING. Please state Model, Caliber, Serial Number, and Finish Color when ordering. For parts, information and service contact: European American Armory Corp., 3855 North U.S. Highway One, Cocoa, Florida 32926 Phone: (321) 639-4842. E-mail: eaacorp@bv.net. Web Site: www.eaacorp.com